

# 全球公寓建筑设计 II

## Architecture of Apartments in the World

ThinkArchit 工作室 主编



华中科技大学出版社

<http://www.hustp.com>





# Piazza Céramique

## 塞拉米克公寓

Architecture Design / 设计事务所：

Jo Janssen Architecten - prof. ir.

Wim van den Bergh architect

Location / 地点：

Netherlands (荷兰)

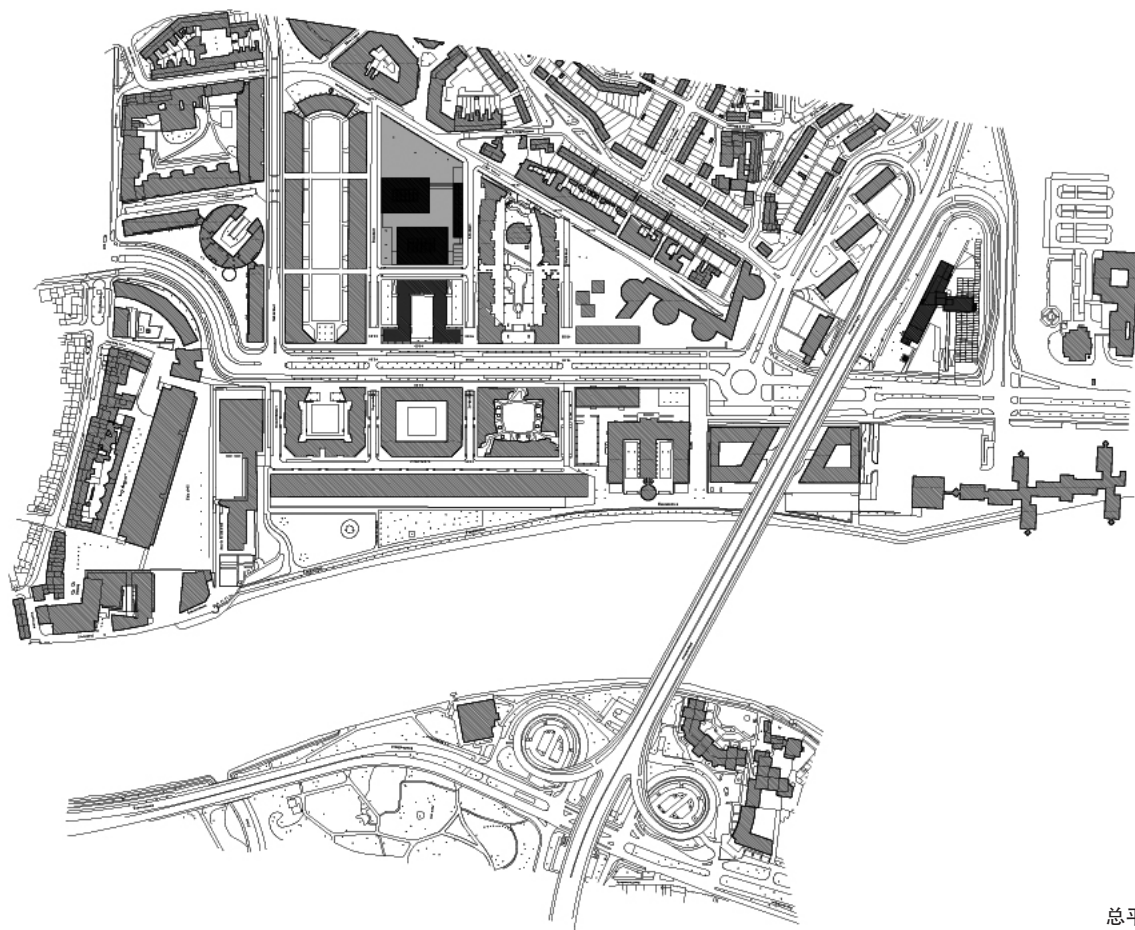
Photography / 摄影：

Kim Zwarts

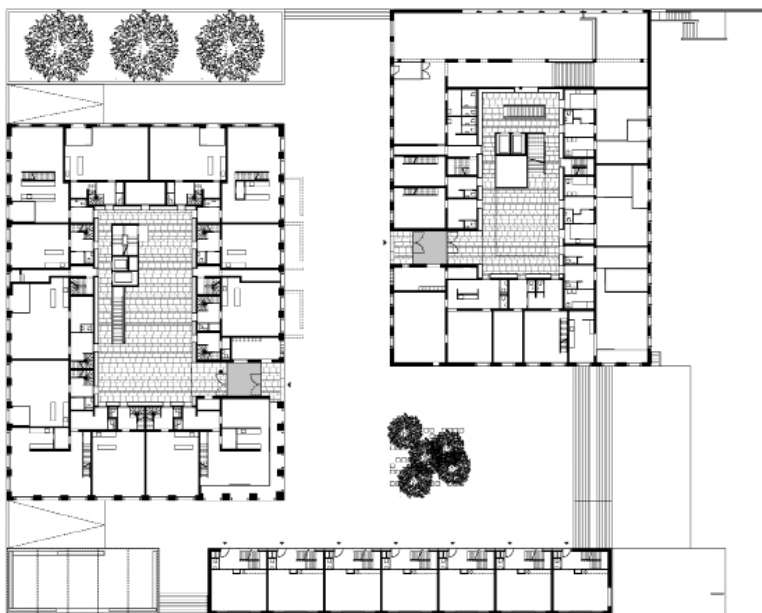
As one of the last urban blocks to be realized in the “Céramique – Area” of Maastricht the scheme does not opt for the here common solution of the closed perimeter block, but employs a spatial strategy in which urban space is opened up. Through strategically placing 3 volumes it not only makes that the public space flows through the site, but it also involves the triangular green area to its east into this interlinking of urban spaces.

The program to be housed within the block was that of an integrated form of dwelling and working. In terms of typology the project tries to revive the 19th century type of mansion annex practice usually inhabited by lawyers, doctors, architects etc. Characteristic for this type of integrated house and practice was the separation of entrances, leading to the public practice and the private house. So one of the themes informing the de-

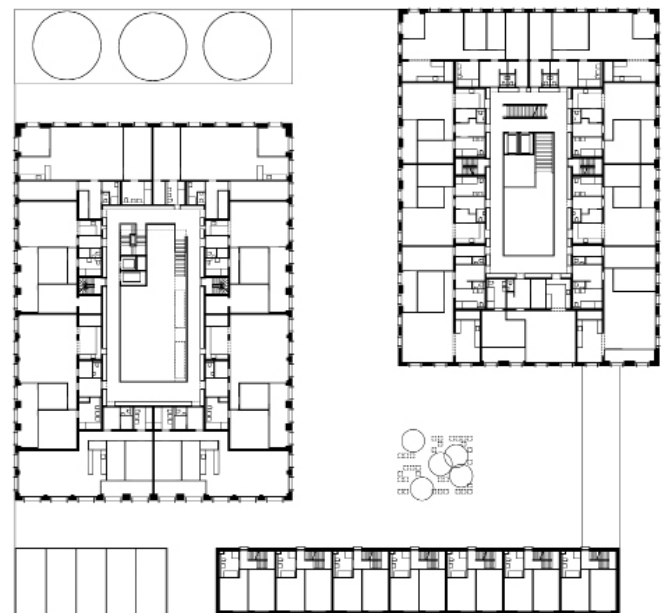
sign of these integrated apartments is the double entry and the psychological split (eventually even a split in level) between the more private space of the family and for living and the more public space for working and receiving clients. Another result of the synergy of integrating dwelling and working within the same block is the possibility to create a more spacious entry hall than the one usually possible in a Dutch housing project. In this case it is a glassed atrium that acts as a sort of public lobby for both the apartments and the workspaces. Also the choice of construction was an uncommon one for a housing project. Normally the floors span from apartment to apartment, however to keep the subdivision of the integrated apartments as flexible as possible the floors in this project span from the outer façade to an inner ring of service spaces, which concentrates all infrastructure. →



总平面图

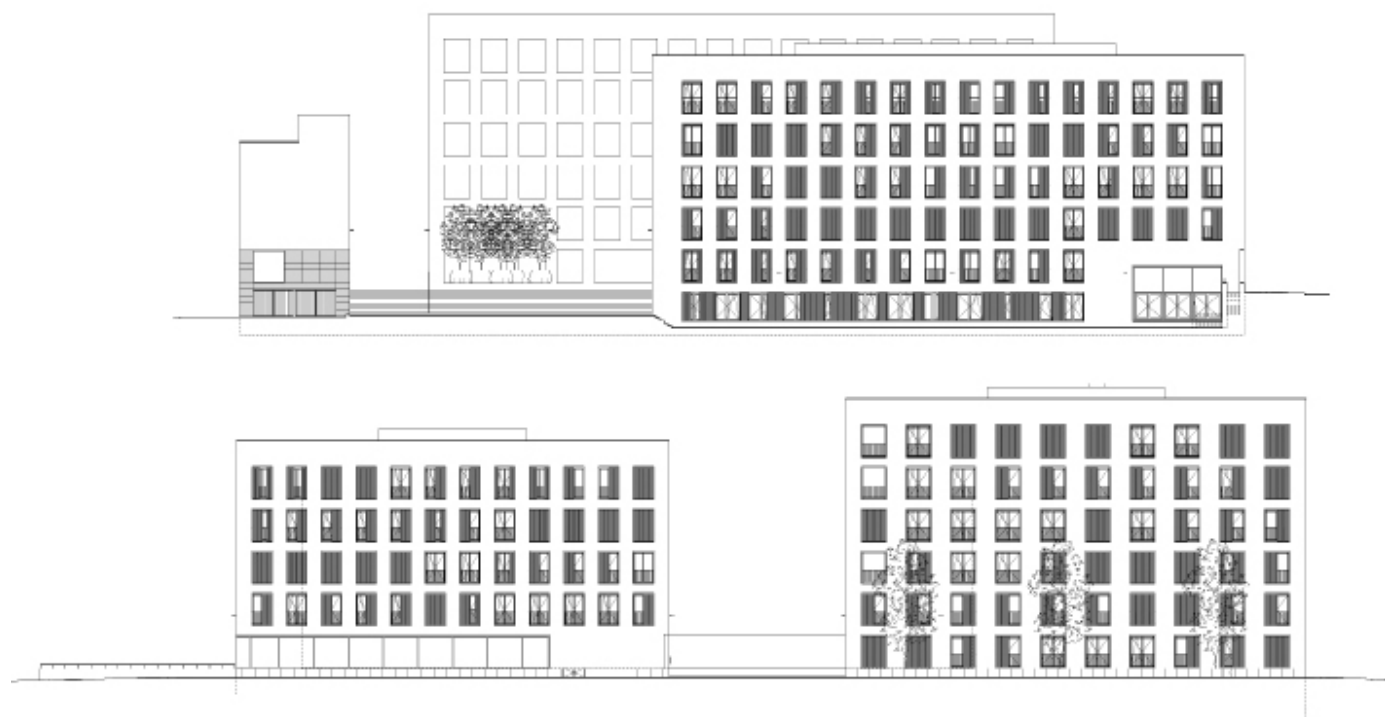


一层平面图

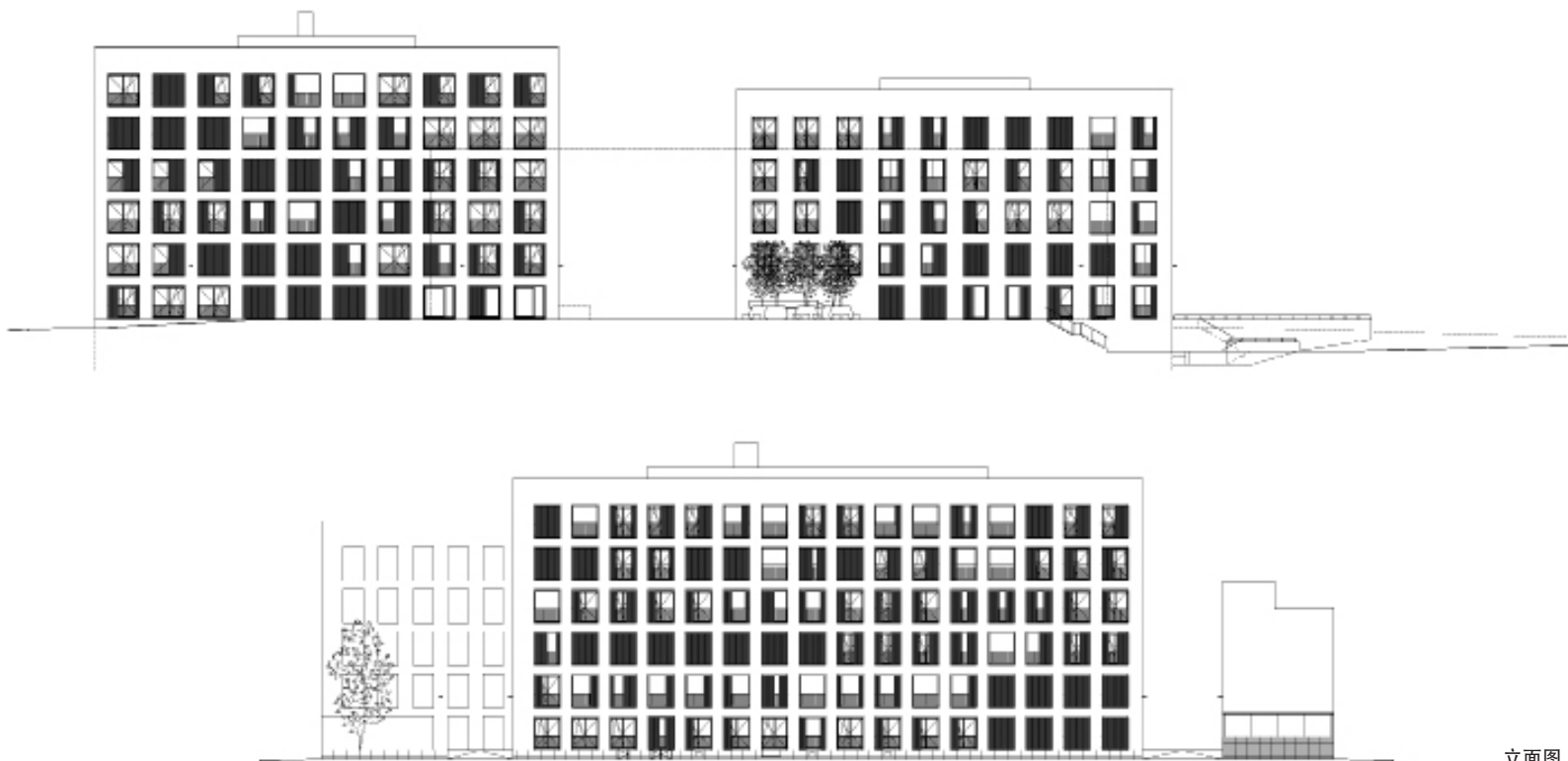


三层平面图





剖面图



该项目是荷兰马斯特里赫特市塞拉米克地区的一个城市空间建设项目，它并没有采用封闭式的街区建造方案，而是使用了全新的开放式空间策略，使城市空间与外部空间相贯通。该城市公共空间中设置有三座建筑，地块东部还有一块三角形的绿地，该绿地将公共空间联系成一个整体。

整个项目拥有复合式的住宅和工作空间。从类型学上来看，该项目内的建筑类似于19世纪律师、医生、建筑师等职业群体所青睐的公寓。该公寓的主要特色是入口处彼此分离，分别通往公共空间和私人公寓空间，因此打造了多个入

口和空间分隔（更为私人一些的家庭生活空间、更为公共一些的工作区和客户接待区之间的分隔）。将公寓空间和工作空间整合到一座建筑中的另一个结果就是可以打造一个非常宽敞的入口区，这在荷兰的公寓设计中是很常见的。玻璃幕墙围合的中庭对公寓和工作空间而言还充当着公共会客厅的角色。该建筑所使用的建造手法是不同寻常的，公寓单元的细部设计具有很大的灵活性。另外，建筑外部立面和内部空间的设计也保持了风格上的一致性。





